



Building Elegance

Sliding shutters | Folding shutters | Canopies | Fins | Special solutions

Assembly manual 110TC

Step 1.

Step 1. Measure and mount brackets.

Ensure that they are placed at the correct center-to-center distance (A) and aligned properly.

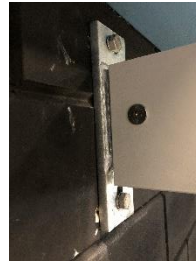


Step 2.

Place aluminum carriers.

Mount the CPR-110E (end carrier) over the bracket using an M10x30 countersunk bolt (DIN7991), M10 washer (DIN125-A), M10 spring washer (DIN128), and M10 hex nut (DIN934).

Mount the CPR-110M (mid carrier) over the bracket using an M10x35 hex head bolt (DIN933), M10 washer (DIN125-A), M10 spring washer (DIN128), and M10 hex nut (DIN934)

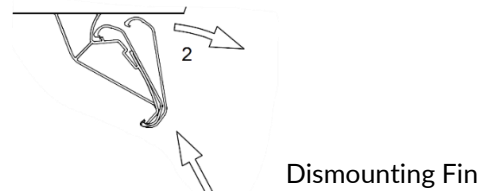
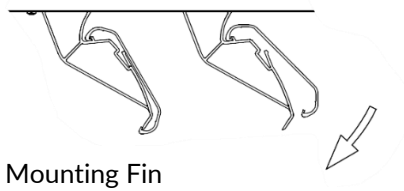


Depending on the center-to-center distance of the louvers, this connection should be temporarily removed..

Step 3.

Assembly brackets.

Place the first bracket in the carrier up to the starting point of the first louver, repeat for all carriers. Click the first louver in place in each compartment. Ensure they are aligned properly. Secure the bracket using a 3.5x16 Tapping Screw (ISO 7050).



Step 4.

Mounting the louvers.

After the first row of louvers is in place, the compartments can be filled with the specified amount of louvers. Depending on the center-to-center distance of the louvers (D), a spacer (PA6 GF) may or may not be needed. Finally, secure the last bracket in the same way as the first..



Step 5.

Fascia.

Optionally, a front finish can be achieved using a fascia. Secure it using a 3.5x16 Tapping Screw (ISO 7050).



